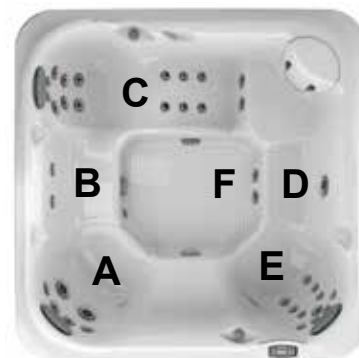


# Jacuzzi J-275

## Specifications

Seating Capacity.....	6 Adults
Dimensions .....	89" x 89" x 36" (226 cm x 226 cm x 91 cm); <b>For Complete Dimensions, See page 82</b>
Perimeter .....	356 in. (904.24 cm)
Dry Weight.....	774 lbs (351 kg)
Filled Weight (Spa Volume) .....	4,861 lbs (2,205 kg)
Filled Weight (Average Fill).....	3,776 lbs (1,713 kg)
Water Capacity (Spa Volume) .....	490 US gallons (1,855 Liters)
Water Capacity (Average Fill) .....	360 US gallons (1,363 Liters)
Electronic Controls .....	Solid state electronic controls with LED readout, programmable temperature, filtration, and heat cycles
Pump 1.....	North America (60 Hz): 2-Speed, 4.5 HP brake, 2.5 HP continuous, 56 Frame
Export (50 Hz): .....	<b>2-Speed, 2.0 HP continuous</b>
Pump 2.....	North America (60 Hz): 1-Speed, 4.8 HP brake, 2.5 HP continuous, 56 Frame
Export (50 Hz): .....	<b>1-Speed, 2.0 HP continuous</b>
Circulation Pump.....	No
Total Jets .....	38
Seat A Jets .....	4 SL3R Rotational, 2 SL5R Rotational
Seat B Jets .....	2 SL3R Rotational
Seat C Jets .....	6 SL Directional, 8 SL3 Directional, 2 SLR Rotational
Seat D Jet .....	1 SL5 Directional
Seat E Jets .....	8 SL Directional, 2 SLR Rotational, 1 SL3 Directional
Footwell (F) .....	2 SL3 Directional
Massage Selectors .....	None
Air Controls .....	2
Water Management System .....	One 50 ft <sup>2</sup> filter cartridge on jets pump 1, Factory installed CLEARRAY® unit
Export (50 Hz): .....	<b>Factory installed CLEARRAY® unit</b>
LED Lighting .....	LED Lighting System (Interior Surround); Standard Exterior Light
Cabinet Colors .....	Smoked, Charcoal
Acrylic Colors .....	Platinum, Silver Pearl, Monaco, Midnight, Porcelain
Headrests .....	3
Heater: .....	North America (60 Hz): 5.5 kW, High Flow
Export (50 Hz): .....	<b>High Flow, 2.7 kW</b>
Electrical Requirements: .....	North America (60 Hz): 240 VAC@40A, 50A or 60A <b>Export (50 Hz): 230 VAC@1x16A, 1x32A or 2 out of 3-phase (see manual) or suitably rated circuit breaker to comply with local electrical codes. Certain countries may require dual power inputs; two GFCI RCD breakers are required for this configuration.</b>
Warranty* .....	North America (60 Hz): 5 Years Shell, 3 Years Shell Surface, 3 Years Plumbing Component Leaks, 3 Years Equipment and Controls, 1 Year Cabinet, 1 Year Jets <b>Export (50 Hz): 5 Years Shell, 3 Years Shell Surface, 3 Years Plumbing Component Leaks, 3 Years Equipment and Controls, 1 Year Cabinet, 1 Year Jets</b>
Alternative Insulation (Standard): .....	Yes (Insulation Panels)
Special Features (Optional) .....	Factory installed SmartTub® Module
Audio System (Optional).....	N/A



# Jacuzzi J-275

## Operation/Seat Depths

**Air Control 2:**  
Opens/Closes  
Air Inlet to Jet  
Group B



**Air Control 1:**  
Opens/Closes  
Air Inlet to Jet  
Group A

Group A Jets are  
always on when  
Pump 1 is running.

Group B Jets are  
always on when  
Pump 2 is running.

### 38 Total Jets



SL Jets (14)



SLR Jets (4)



SL3 Jets (11)



SL3R Jets (6)



SL5 Jet (1)



SL5R Jets (2)

Spa Operation Subject to Change without Notice

## Seat Depths

**A = 24.50" (62.23 cm)**

**B = 21.50" (54.61 cm)**

**C = 24.75" (62.87 cm)**

**D = 25.50" (64.77 cm)**

**E = 17.50" (44.45 cm)**

**F = 21.38" (54.29 cm)**

**G = 25.75" (65.41 cm)**

**H = 17.25" (43.82 cm)**

**I = 30.00" (76.20 cm)**

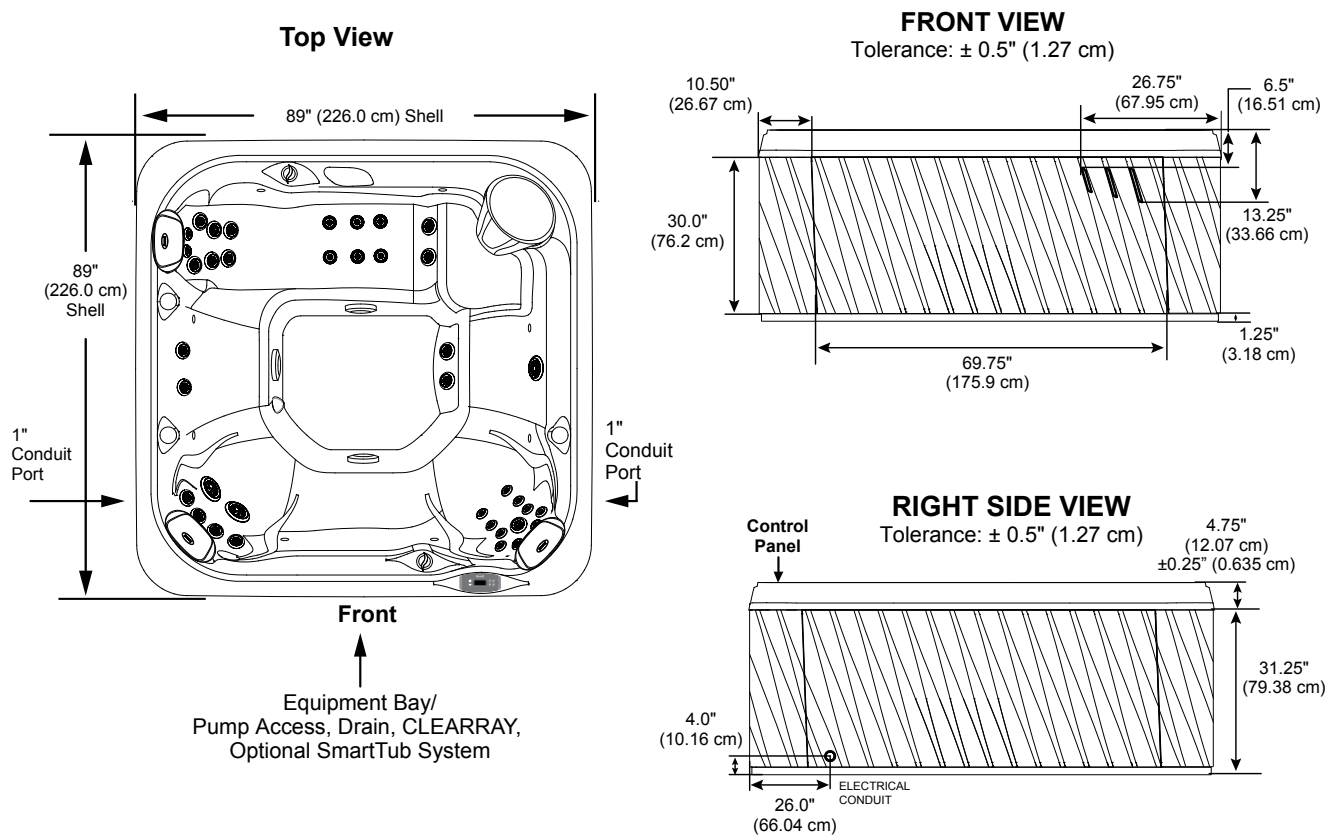
Listed dimensions  
represent distance from  
top of acrylic to lowest  
point in seat. Tolerance  
 $\pm 0.5"$  (1.27 cm).



Dimensions/Specifications are Subject to Change Without Notice

# Jacuzzi J-275

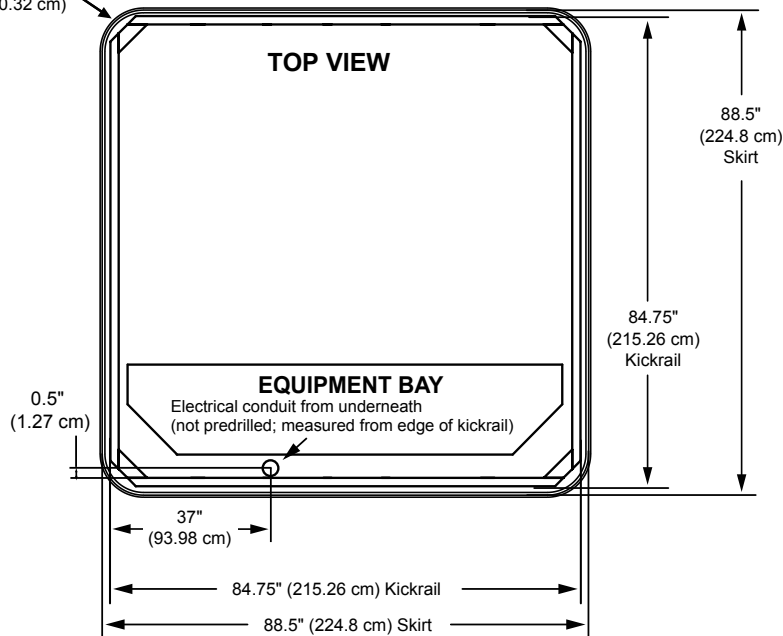
## Dimensions



**IMPORTANT! Always measure each hot tub for exact dimensions BEFORE designing its foundational support and/or decking.**



Cabinet Radius:  
 $\approx 10.0"$  (20.32 cm)



Dimensions/specifications subject to change without notice. Tolerance:  $\pm 0.5"$  (1.27 cm)

Dimensions/specifications subject to change without notice. Tolerance  $\pm 0.5"$  (1.27 cm)